

Ksignal

World's Best Ever Software

Ksignal

- Trade becomes simple in NSE, NSE-Future, Options, MCX.
 - Understanding the Ksignal is very easy.
 - Selling at perfect high and buying at right low.
 - Easy to find clear trading entry and targets with stop.
 - Most accurate BUY &SELL Signals.
 - Highest Success Ratio in all market segments.
 - No need to watch economic data release or news impact.
 - Real time Indian market data is given.
 - Easy to find out the trend of markets in all the timeframes like M1, M5, M15, M30, H1, H4, and D1.
 - User Friendly tool to find the best trade entries.
-

Ksignal Market Watch

Market Watch for NSE, NIFTY OPTIONS & MCX

SYMBOL	LTP	TREND	SYMBOL	LTP	TREND	SYMBOL	LTP	TREND	SYMBOL	LTP	TREND
ACC#	1569.30	BUY	HDFCBANK#	1161.00	BUY	SUNPHARMA#	753.55	BUY	MGLD	31572	BUY
ADANIPOARTS#	203.00	BUY	HEROMOTOCO#	3052.00	BUY	TATAMOTORS#	447.35	BUY	MSIL	42812	BUY
AMBUJACEM#	248.20	BUY	HINDALCO#	116.80	BUY	TATAMTRDVR#	295.25	BUY	MCRO	3264	BUY
ASIANPAINT#	990.00	BUY	HINDUNILVR#	857.80	BUY	TATAPOWER#	72.70	BUY	MCOP	317.30	BUY
AUROPHARMA#	704.30	BUY	ICICIBANK#	231.40	BUY	TATASTEEL#	311.95	BUY	MNIC	607.00	BUY
AXISBANK#	509.00	BUY	IDEA#	99.75	BUY	TCS#	2568.00	BUY	MALU	109.15	BUY
BAJAJAUTO#	2662.45	BUY	INDUSINDBK#	1090.55	BUY	TECHM#	508.00	BUY	MLEA	Krishna Levels	BUY
BANKBARODA#	146.45	BUY	INFRADEL#	322.00	BUY	ULTRACEMCO#	3289.95	BUY	MZIN	135.70	BUY
BHARTIARTL#	354.50	BUY	INFY#	1191.20	BUY	WIPRO#	555.80	BUY	MNAG	181.90	SELL
BHEL#	118.35	BUY	ITC#	353.35	SELL	YESBANK#	1078.95	BUY	GLMM	31300	BUY
BOSCH#	21250.70	SELL	KOTAKBANK#	732.20	BUY	ZEENEWS#	25.05	BUY	SLMM	42795	BUY
BPCL#	1013.70	BUY	LT#	1426.35	BUY	NIF_C_8100	63.00	BUY	MCROM	3264	SELL
CIPLA#	476.50	BUY	LUPIN#	1464.00	BUY	NIF_C_8000	120.05	BUY	MINICOP	317.40	SELL
COALINDIA#	311.30	BUY	MM#	1383.00	BUY	NIF_P_8000	46.95	SELL	MININIC	607.00	BUY
DRREDDY#	3142.05	BUY	MARUTI#	4092.10	BUY	NIF_P_7900	24.15	SELL	MINIALU	109.15	BUY
EICHERMOT#	18638.00	BUY	NTPC#	148.50	BUY	NIFTY	8075.60	BUY	MINILEA	115.40	BUY
GAIL#	379.00	BUY	ONGC#	209.40	SELL	BANKNIFTY	17366.90	BUY	MINIZIN	135.70	BUY
GRASIM#	4275.95	BUY	POWERGRID#	155.20	BUY						
HCLTECH#	742.00	SELL	RELIANCE#	948.55	BUY						
HDFC#	1225.00	BUY	SBIN#	211.00	BUY						

www.krishnacommodity.in

NSE_SPOT NSE_FUTURE

Traders can chose NSE-SPOT or NSE-FUTURE in Ksignalmarket watch. Also it shows the current trend of the market in all the segments MCX, NIFTY, NIFTY OPTIONS which is have in market watch. If traderscan click the scrip in market watch then automatically to load the scrip with Ksignal tool.





- TITLE** -CURRENT SCRIP NAME WITH LTP
- BUY ABV** - BUY ABOVE @ 3142, ONCE **BUY SIGNAL** IS GENERATED PLACE **BUY** PENDING ORDER AT 3143
- STOP BLW** - STOP BELOW @ 3116 (PLACE STOP PENDING ORDER AT 3115)
- TARGET1** - **TARGET1** IS 3155 AND
- TARGET2** - **TARGET2** IS 3168
- HIGH** - TODAY HIGH
- LOW** - TODAY LOW
- PRE HIGH** - PREVIOUS DAY HIGH
- PRE CLOSE** - PREVIOUS DAY CLOSE
- PRE LOW** - PREVIOUS DAY LOW
- M1,M5,M15, M30, H1, H4, D1**- MULTI TIMEFRAME TREND IDENTIFIER
- P/L** - PROFIT /LOSS Example (PROFIT 5, LOSS -5)IF ORDER IS NOT EXECUTED P/L IS BLANK.

Ksignal BUY and SELL Entry



BUY Entry - BUY ABV: 3267

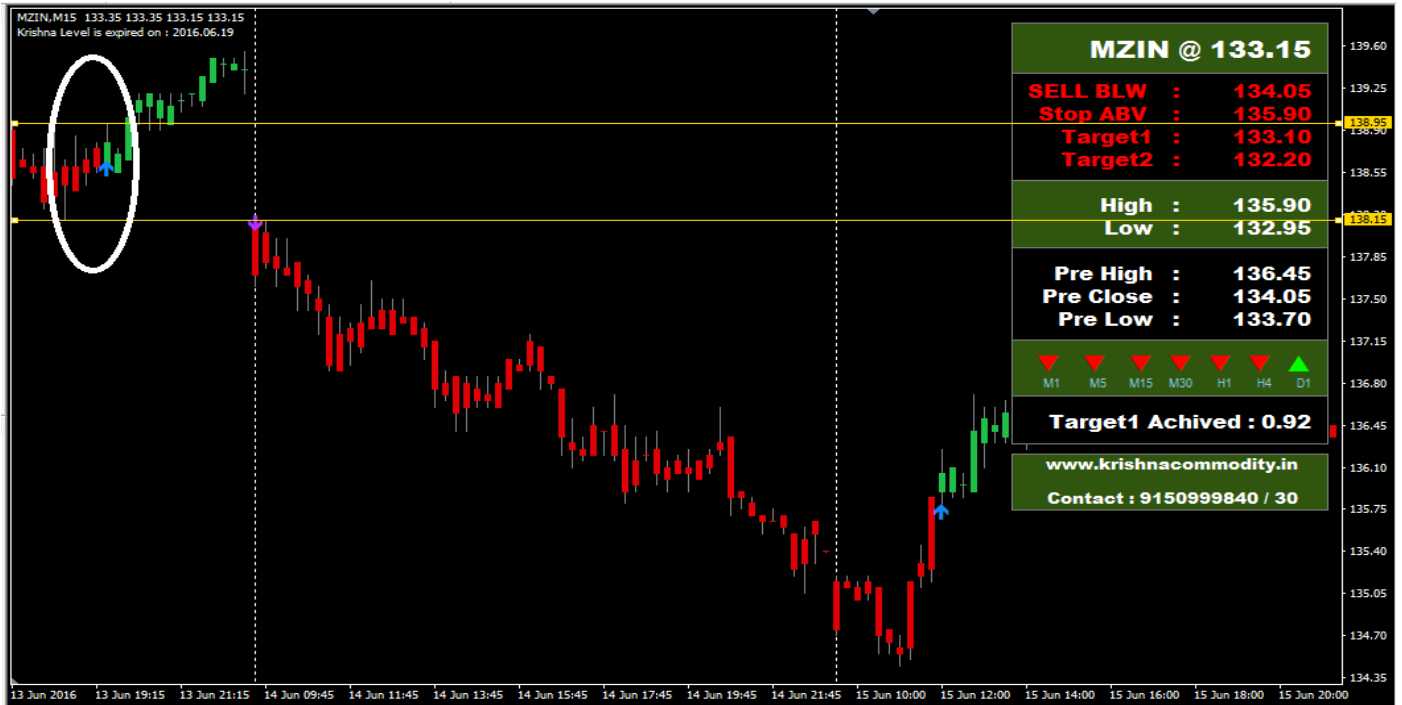
SELL Entry - SELL BLW: 3248

In the above scenario **BUY ABV@ 3267** is generated but BUY order is not executed because of the market is not break the **BUY ABV** price 3267.

After SELL signal **SELL BLW @ 3248** is generated and the market is break the price of 3248, so the SELL order is executed.

Every signal have STOP and TARGETS, so traders should follow the stop and targets. Traders can exit the positions in Target1, otherwise risky traders can wait for Target2. In meanwhile traders can exit 50% of lot in Target1 and move the stop in entry price, to exit full lot in Target2. If the trend is changed and the opposite signal is executed then to exit the current order position.

KSIGNAL CHART SCREENSHOT



FOR BUY SIGNAL GENERATED AND BUY ABOVE @ 138.95 STOP IS 138.15.



IF THE ORDER IS NOT EXECUTED THEN THE P/L IS BLANK.



IF TARGET "1" IS ACHIVED ONCE P/L IS NOT CHANGED UNTIL "2" TGT IS REACHED.



IF TARGET "2" IS ACHIVED ONCE - P/L IS NOT CHANGED.

KSIGNAL BREAKOUT STRATEGY



If BUY Signal is generated and BUY entry is not activated (i.e. not break the high) also immediately SELL signal is generated, SELL entry is not activated (i.e. not break the low) and the difference between BUY and SELL signal (High - Low) is very low then

BUY can be initiated above BUY signal price (break the high) with stop below SELL signal price (break the low) or SELL can be initiated below SELL signal price (break the low) with stop above BUY signal price (break the high), TARGET is the difference between the BUY Signal and SELL signal (High - Low) with low risk.

WHEN TO AVOID THE SIGNAL



If the Signal (BUY or SELL) generated after long candle appears or gap up, gap down in the market open, must to avoid those entries because of the stop is huge.

CONTACT US:

KRISHNA ACADEMY,
1037-B SaiBalaji Square 3rd Floor,
Bharathiar Road, Papanayakanpalayam,
Coimbatore- 641037, Tamilnadu.

Web : www.krishnacommodity.in

Email : sales@krishnacommodity.in

support@krishnacommodity.in

Phone : 9150999830 / 9150999840 / 0422 – 4379444

Skype :krishnaacademy



THANK YOU.

DISCLAIMER:

LOGIN ID WORKS PER SYSTEM

AVOID COPY TRADING OR MISUSE - ACCOUNT WIL BE TERMINATE WITHOUT NOTIFICATION.